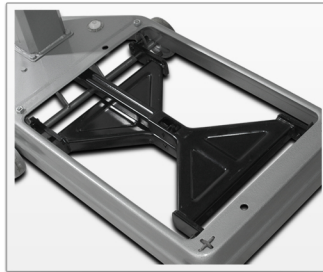


TBI

TIMBANGAN MEKANIK



Design DOUBLE V-SHAPE



Teknologi FULL-PRESSED BODY

Kapasitas: 50kg ~ 2000kg



TBI-310 model ▲



CAHAYA ADIL



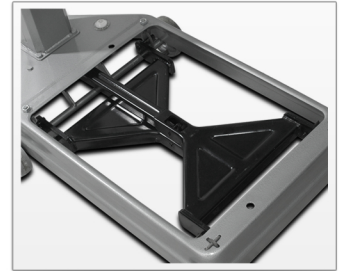
neo CahayaAdil

TBI series

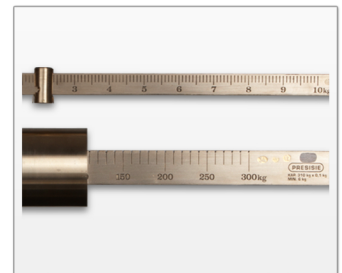
| Models | TBI-50 | TBI-150 | TBI-310 | TBI-520 | TBI-520S | TBI-1050 | TBI-2100 | TBI-3100 | TBI-5200 | TBI-1500H |
|----------------------|---------|---------|---------|---------|----------|----------|-----------|----------|-----------|-----------|
| Kapasitas (kg) | 50 | 150 | 310 | 520 | 520 | 1050 | 2100 | 3100 | 5200 | 1500 |
| Ketelitian (g) | 10 | 100 | 100 | 200 | 200 | 500 | 1000 | 1000 | 2000 | 500 |
| Ukuran Platform (cm) | 44 x 32 | 62 x 48 | | 62 x 58 | | 117 x 79 | 160 x 120 | | 180 x 120 | 190 x 110 |

Features

- ◆ Kapasitas 50kg ~ 5200kg
- ◆ Pabrikasi Full-pressed body
- ◆ Teknologi Powder coating
- ◆ Stang kuningan direkomendasi oleh Direktorat Metrologi
- ◆ Design inovatif 'Double V-shape'
- ◆ Roda besi tahan banting
- ◆ Garansi 1 tahun penuh



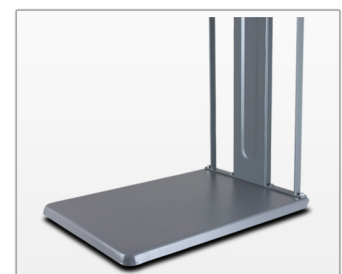
Design DOUBLE V-SHAPE



STANG KUNINGAN rekomendasi Direktorat Metrologi



Finishing POWDER COATING



Teknologi FULL-PRESSED BODY



▲ TBI-1500H (Hewan)

